



Makin' 3D Wheel Loader

Higher versatility and accuracy

At Makin, we understand that a machine control solution for a wheel loader must enhance the wheel loader's functionality. That's why our wheel loader solution incorporates innovative features designed to support and improve your workflow.

Switch tool point

Achieve fine grading with the wheel loader, even when driving in reverse. The machine operator can seamlessly switch the machine control's tool point from the front blade to the back blade.

Blade wear

Blade wear can be significant when the wheel loader operates in coarse materials, like stone chips. The operator can easily adjust for blade wear on both the front and back blades as needed.

Attack angle

When pushing material, the weight can cause the blade to cut too deeply. Conversely, dragging material can lift the blade, causing under-cutting. Use the attack angle and prevent over or under cutting.

BENEFITS:

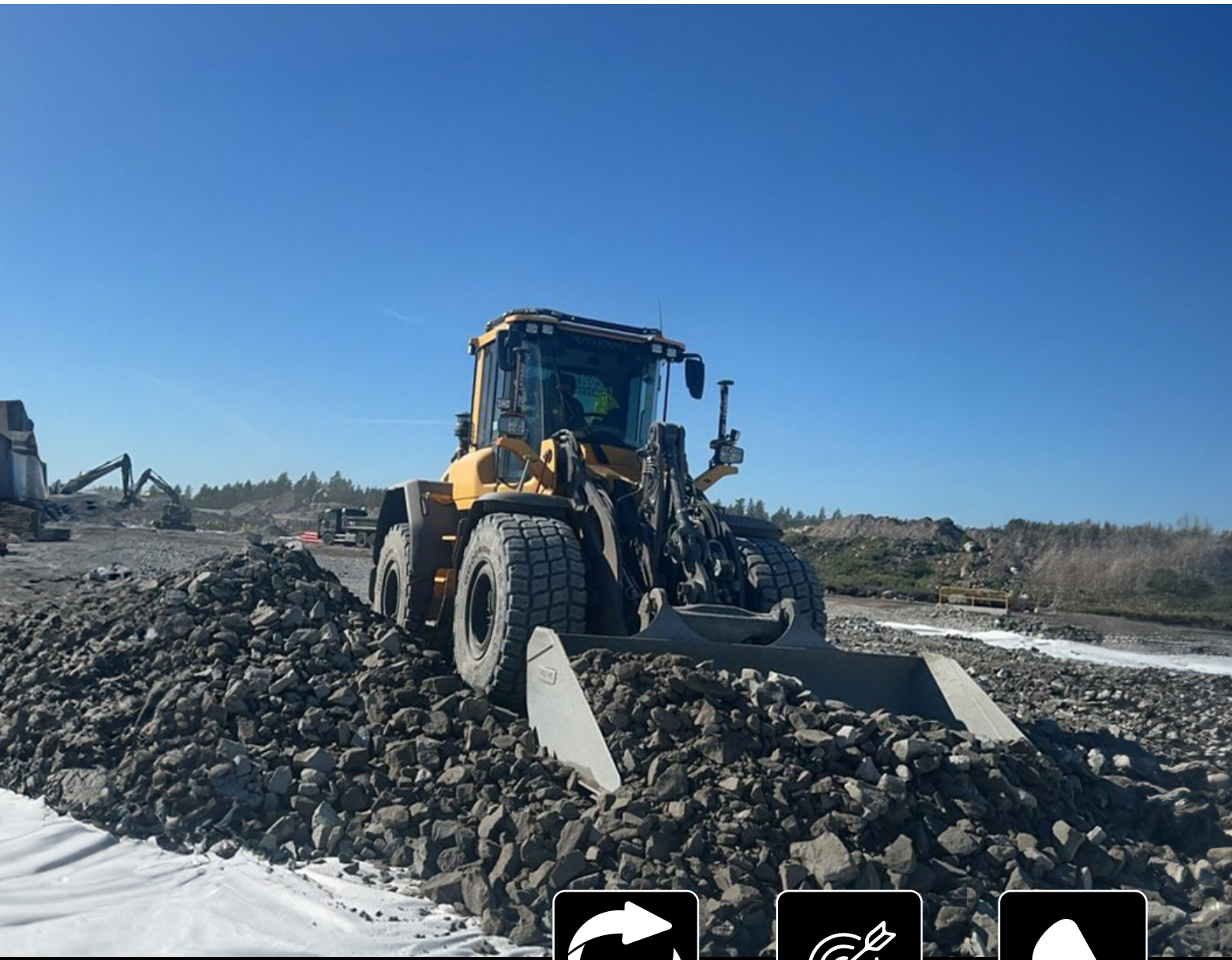
- + Fine grade in reverse
- + Higher accuracy
- + Prevent over- and under-cutting

Use your wheel loader for more jobs

This easy transition between front and back blades enhances the wheel loader's workflow, supporting efficient material pushing and dragging operations.



Prevent over-cutting and under-cutting during fine grading with your wheel loader by adjusting the bucket slope to match the design model slope for optimal accuracy. Use the speed indicator in the work screen to maintain consistent speed and achieve a high-quality grade job.



Fine grade
in reverse



High
accuracy



Prevent over and
under cutting