

*Makin'
a Difference*



MAKIN

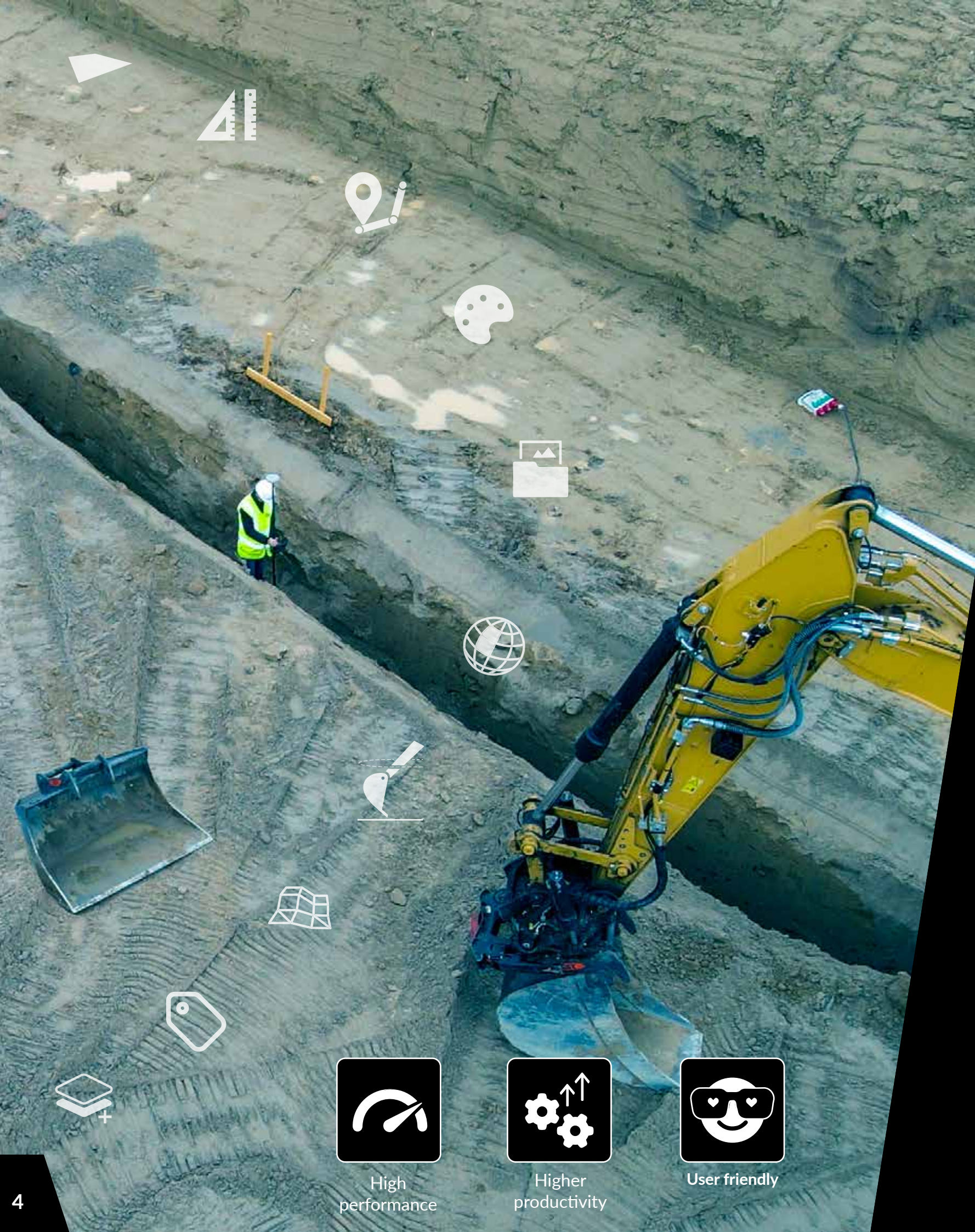
Table of Contents

| | |
|---------------------------|----|
| Why Makin? | 4 |
| Evolution of Data..... | 6 |
| Makin' Excavator 2D | 8 |
| Makin' Excavator 3D | 10 |
| Makin' Survey | 12 |
| Makin' PerFormans | 14 |
| Makin' Cloud | 16 |
| Makin' Surfaces | 18 |
| Makin' Synergy | 20 |
| Customer Story | 22 |
| Where to find Makin | 26 |

*"I have never tried
a system this fast"*

Frederik Søndergaard





Why Makin?

Efficiency and productivity at a glance

The Makin' solutions support the construction workflow in and around the excavator when accuracy and digital documentation are required. And Makin is more than machine control. With Makin' Survey and Makin' PerFormans, Makin delivers workflow tools that help the construction industry manage projects digitally. All solutions are built on the same software platform and with Makin' Cloud integration for a comprehensive site control solution.

Makin is a flexible and modular software based on a solid IT architecture. It prioritizes user-focused development, minimizing time-to-market and aiming for high performance on both software and hardware.

Makin prioritizes routines, features, and tools for customers' daily work. It offers auto calibration, remote support, online overview, and logging, resulting in fewer mistakes, maximum uptime, and increased productivity for users.

Makin optimizes software and hardware to handle large models, providing a comprehensive project overview without the need for file splitting. The system is fast, responsive, and reliable.

Makin prioritizes user experience with an intuitive interface, userfriendly icons, and customizable options. The interface can be scaled up or down in complexity based on user needs. The goal is to provide a system that is detailed for advanced users while remaining simple for beginners.



High performance



Higher productivity



User friendly

The Evolution of Data

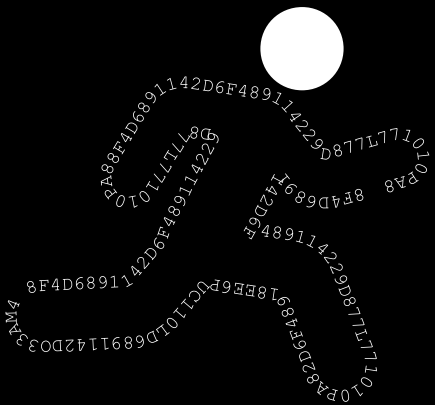
used in the construction industry



[30 years ago]
Guided by data
Using data as a tool



[5 years ago]
Collecting of data
Accurately & automated



- TODAY -
Putting data into action

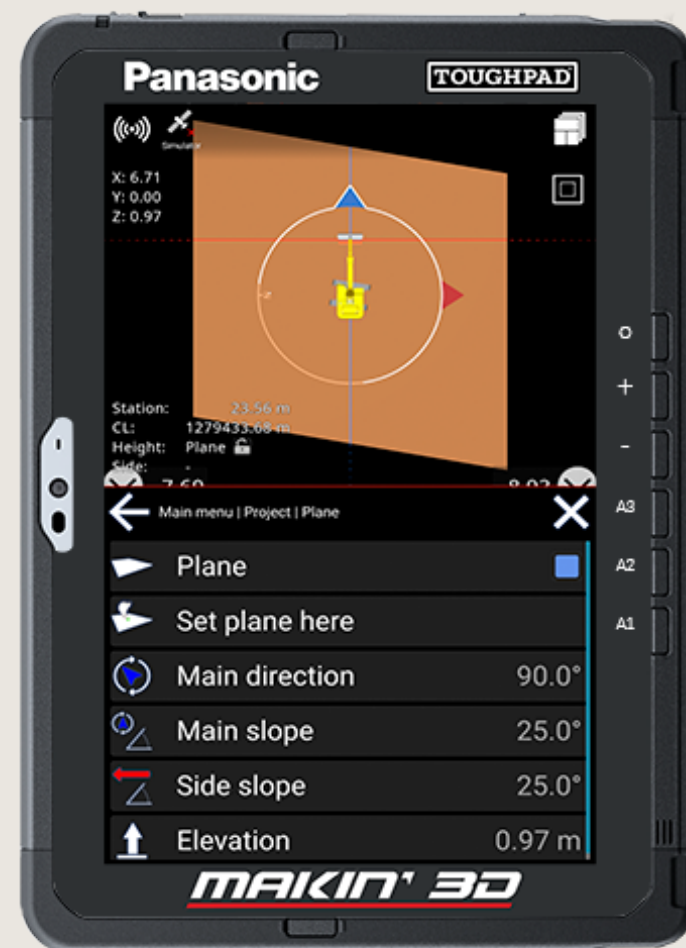
Machine control has undergone significant advancements over the years, from simple guidance systems to the inclusion of GNSS, sensor technology, and telematic integrations for enhanced accuracy and efficiency in excavating operations.

Overall, the evolution of machine control has moved towards greater automation, precision, and integration with digital technologies, making heavy construction operations more efficient, accurate, and productive.

Today, advanced machine control systems generate Big Data for enhanced documentation, analysis, and site optimization.

Makin' Excavator 2D

Intuitive interface for machine operators



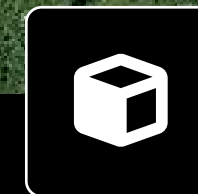
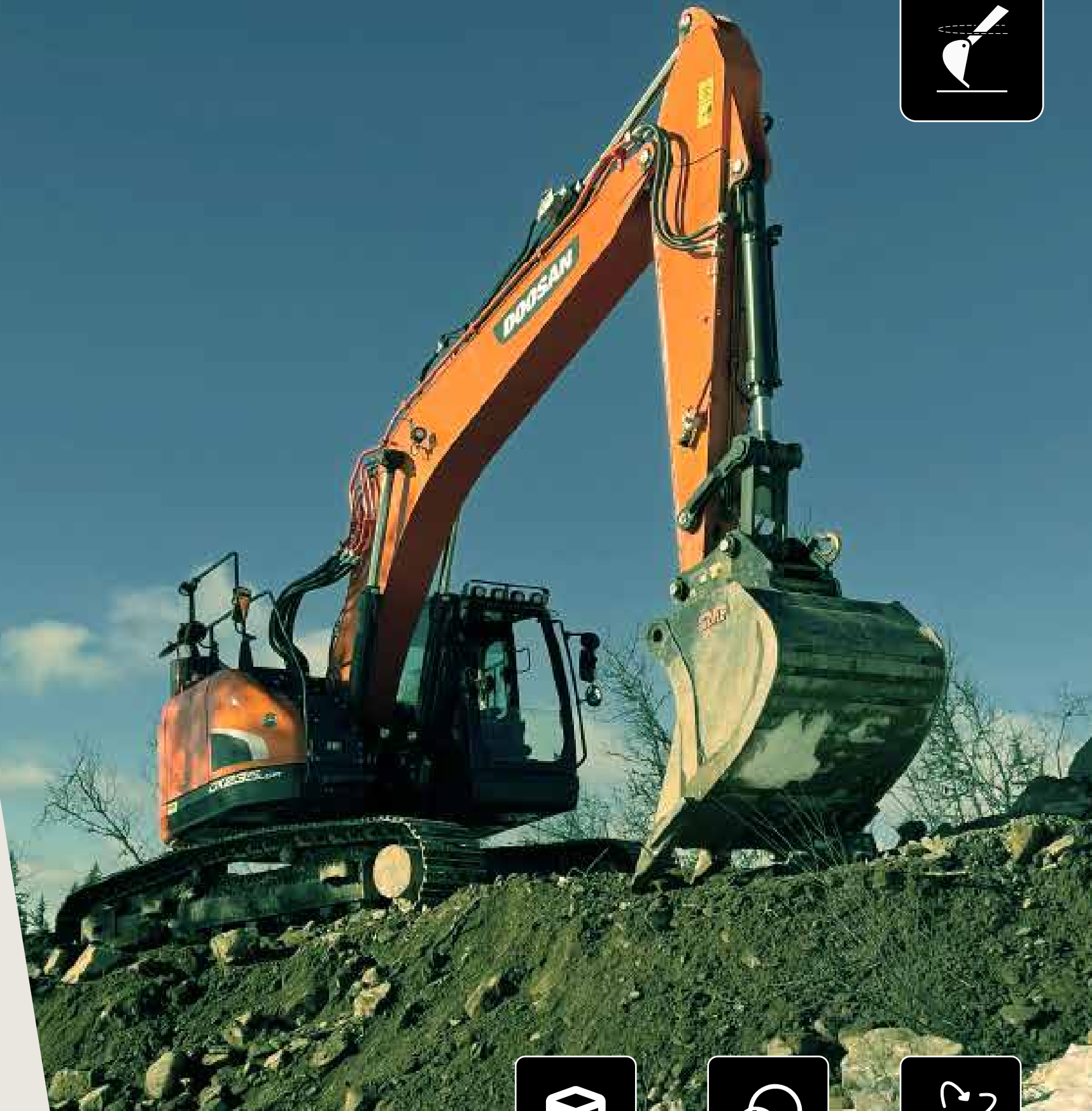
BENEFITS:

- + Better overview
- + Fewer mistakes
- + Less wear on equipment
- + Better communication
- = Time and costs savings

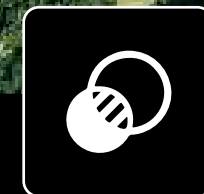
Gain efficiency and maximize output of your excavator with the highly flexible, fully upgradeable:

Makin' Excavator 2D system

Benefit from an intuitive unique visualization of your construction project that provides you with a seamless workflow and high efficiency.



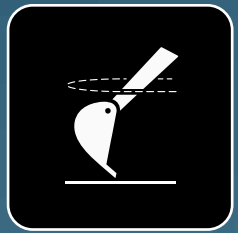
3D consistent
Makin' user
interface



Fast
visualization of
cut/fill values



Tilt, rotation
and multi
boom support





Makin' Excavator 3D

Full 3D visualization - guidance of your project



BENEFITS:

- + Better overview
- + Fewer mistakes
- + Less wear on equipment
- + Better communication
- Time and costs savings

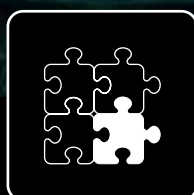
Gain efficiency and maximize output of your excavator with:

Makin' Excavator 3D system

Benefit from an intuitive unique visualization of your construction project that provides you with a seamless workflow and high efficiency.



Icons for all
menus



Integration
platforms

Makin' Survey

Intuitive surveying - full project visualization

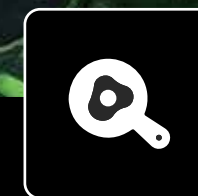
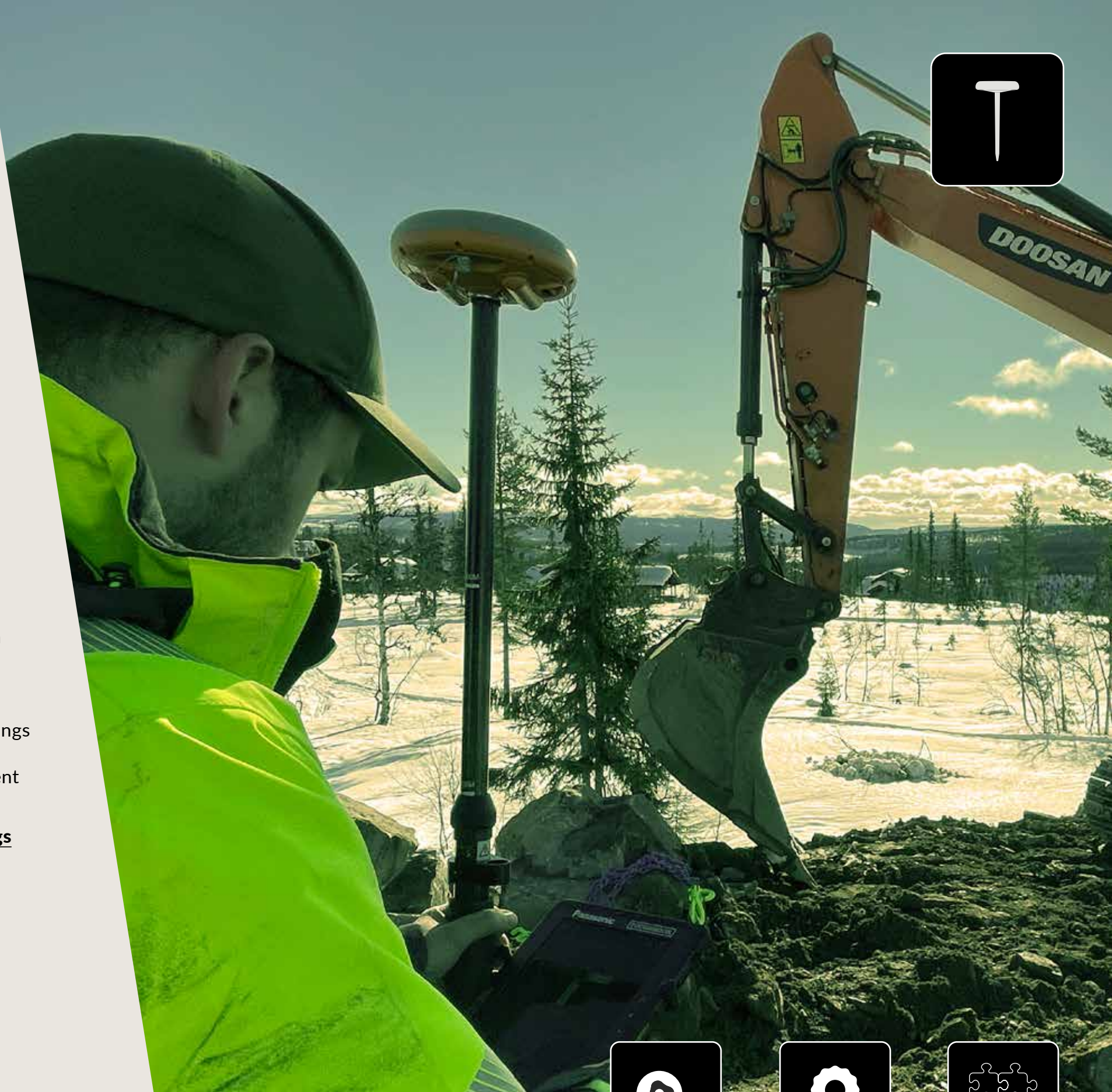


BENEFITS:

- + Better overview
- + Better communication
- + Less rework
- + Fewer misunderstandings
- + Less wear on equipment
- = Time and costs savings**

Makin' Survey is Makin's rover solution for surveying tasks such as stake-out of points or lines, modification or extension of design data or documentation of the work.

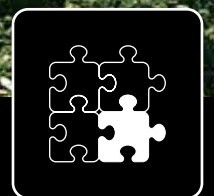
With Makin' Survey, the surveyor can collaborate with the excavator operator and the foreman.



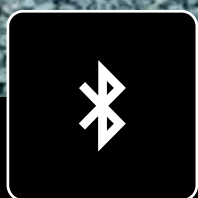
Easy usage



Top-notch rover



Integration platforms



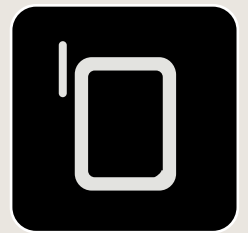
Bluetooth
connectivity



Decimeter
accuracy for
quality control



RTK GNSS
with NTRIP



Makin' PerFormans

Makin' informed decisions faster
- tracking construction projects



BENEFITS:

Access to up-to-date data creates:

- + Better communication
- + Fewer mistakes
- + Better decision-making
- + Fewer misunderstandings
- + Less fuel consumption
- + Less wear on equipment

= Time and costs savings

Increase quality control, performance, and gain efficiency in your construction activities with the fully workflow-integrated:

Makin' Performans solution

Benefit from an intuitive and unique visualization of your construction project, and maximize the uptime and productivity for your machines and operators.

Makin' Cloud

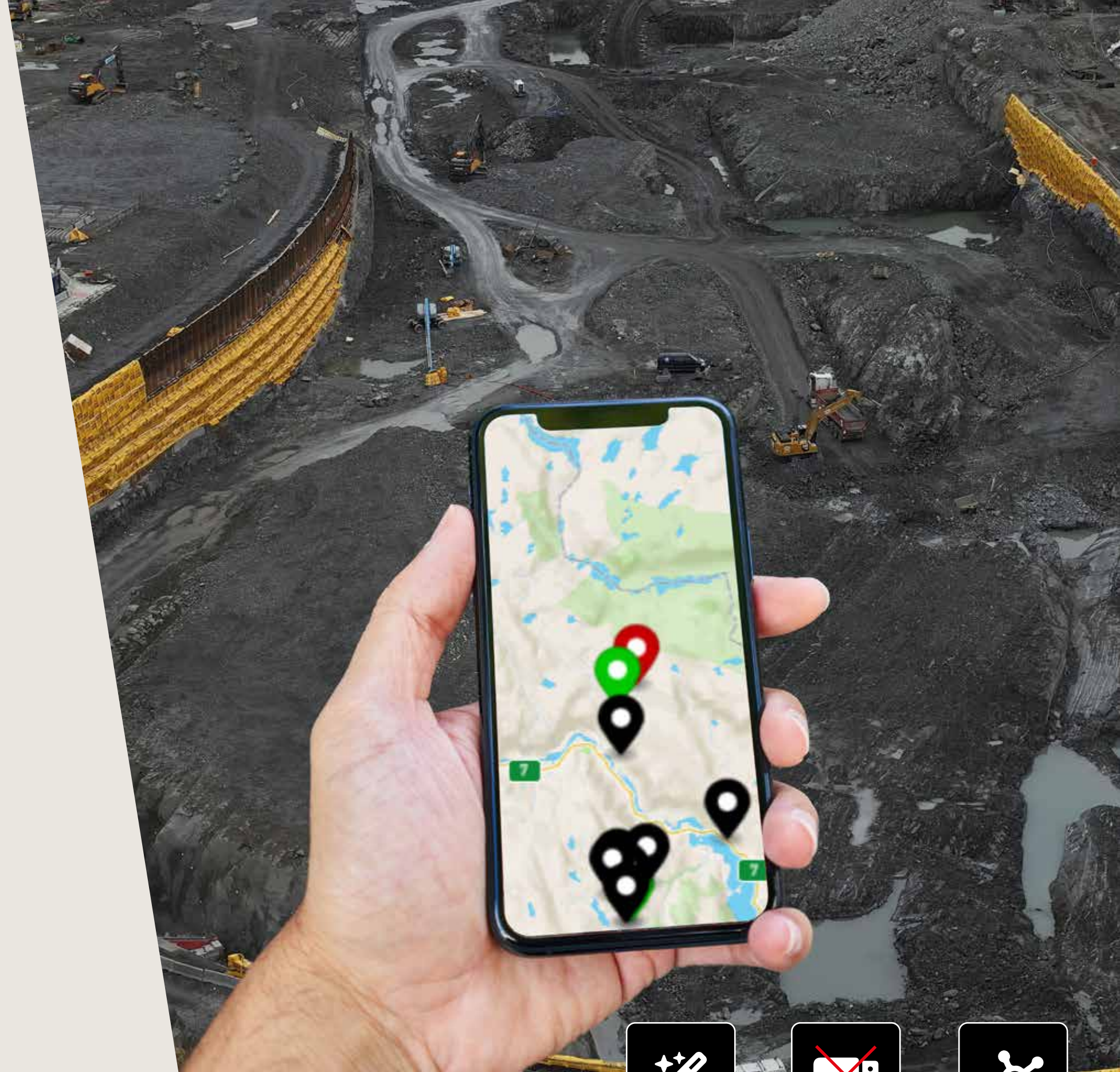
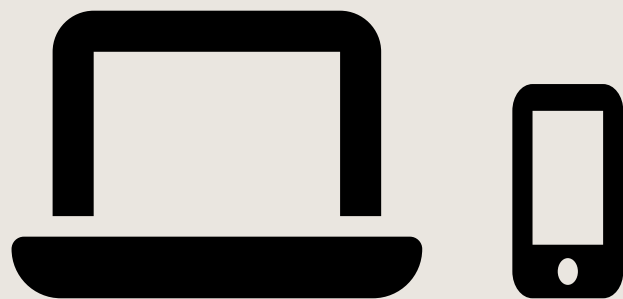
Fully digital workflows

Everyone on a project can communicate via Makin' Cloud, use the chat function, or perform internal support and communication through remote control. All information is stored.

A simulator, Makin' Win, can be downloaded from Makin' Cloud. It can be used for project preparation and project planning.

The manuals are also available in Makin' Cloud.

Exact position, visualization, and address of Makin' solutions can be seen in Makin' Cloud.



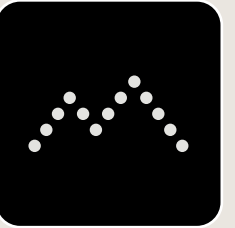
Auto-update of
software on all
Makin units



No extra gear
or servers
needed



Projects update
visible to all
connections in
real time



Makin' Surfaces

Efficiency and productivity at a glance

Makin' Surfaces enhances operator overview and efficiency by automatic as-built surface documentation and graphical visualization of project progress and completion status.

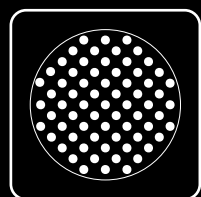
The operator is continuously guided by a color-coded plot showing the bottom of the cut relative to the reference surface.

The documented as-built surfaces are available on Makin' Cloud for exporting and post processing.

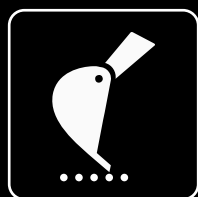
Makin' Surfaces increases project productivity and reduces the operator workload through effortless, continuous documentation of all excavation progress.

BENEFITS:

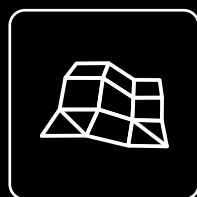
- Accuracy
- + Better documentation
- + Fewer mistakes
- + Better safety on site
- + Dynamic project planning
- + No weather dependency
- = Time and costs savings



Dense point cloud



Measurement from lowest point



Automatic surface log & documentation

Makin' Synergy

Integration with mixed fleet data management providers allows for smooth data sharing on large sites with mixed fleets.

When working on construction sites with machines equipped with machine control solutions from various manufacturers, integration with data management providers offers real-time data sharing between all parties to ensure project success.



Makin' 3D is supported by Gemini Connected

Dataflow from Makin' 3D excavator and Makin' Survey can now be sent directly from Gemini Terrain, and as-built data from Makin' 3D can be received and handled directly.

You activate the functionality in Gemini Connected.



Infrakit

Makin' 3D is supported by Infrakit

Makin's integration with Infrakit offers mixed fleet management on a single platform to increase efficiency. Exchange design files from Infrakit and send as-built documentation and machine localisation to Infrakit automatically.

"We save time, because we don't have to go through multiple cloud solutions for uploads and downloads"

**Vidar Beckmann,
Isachsen Anlegg**



Customer Story

Stefan Lindby replaced 18 machine control systems with Makin' 3D

Swedish Construction company "Väg och Byggnadsgrus på Gotland AB" located on the Swedish island in the Baltic sea Gotland. The family-owned company was founded by grandfather Gösta and is now run by third generation. Business is doing well, and about seven months ago, they decided to make the biggest investment in the history of the company. They decided to buy no less than 18 Makin' 3D machine control systems, not only to increase productivity but also to improve the overall profitability of the company.

They had considered changing their machine control systems for a while. Their existing systems were starting to get outdated resulting in more and more repairs and costly downtime.

They had bought a machine that already had a Makin' system installed. They didn't know the system and called Maskin System's support to get help to get started and soon realized that Makin' 3D is a more modern machine control system with easy project flows throughout the entire workflow. Stefan decided to compare the different suppliers on the market and was curious about the functions and advantages that were available.

- We thoroughly evaluated the system that we needed, and we explored the functions that were available and how they could help us, Stefan explains.

The decision was not easy. Many hours were used for discussions, tests and evaluations. They also knew that they needed a supplier that they could trust and count on for good cooperation in many years to come. The choice was finally made. They chose Maskin System and their system Makin' 3D.

- The most positive thing is that all of our machine operators understand it but also that our office personnel have access to all the project information. Everything is updated in real time, everybody is informed and the workflow is much more seamless.

>>>

Customer Story - continued

When it comes to hardware, explains Stefan, what is most remarkable is the extremely strong performance of the GNSS receiver. It works flawlessly even inside the forest, where others normally block. This has been a key factor, because all of our machines are running 3D with GNSS.

Delivering 18 machine control systems to a company on an island was a rock'n'roll experience

Gotland is an island, as we all know, and everybody within our industry understands that it can be quite a hassle to deliver and install an entire 18 systems.

But Maskin System managed to do just that in record time! Four technicians delivered 16 systems in four days, and the remaining two systems were delivered shortly after. Stefan describes it as an amazing rock'n'roll experience.

- It took some long working days and many visits to McDonald's Drive Thru, but it was quite a fun experience for both parties.

When we asked Stefan if he had reservations about choosing Makin' 3D, he paused for a while and then explained that there was some concern about making one of the company's biggest investments in a relatively new machine control system, and not knowing the exact second hand value.

- Makin' 3D is developed in Scandinavia and has been on the market for fewer years compared to other suppliers that are "worldwide", so it is easier to calculate.

But only time will tell, and Stefan is not concerned.

Makin' Surfaces will bring even more value to Makin' 3D

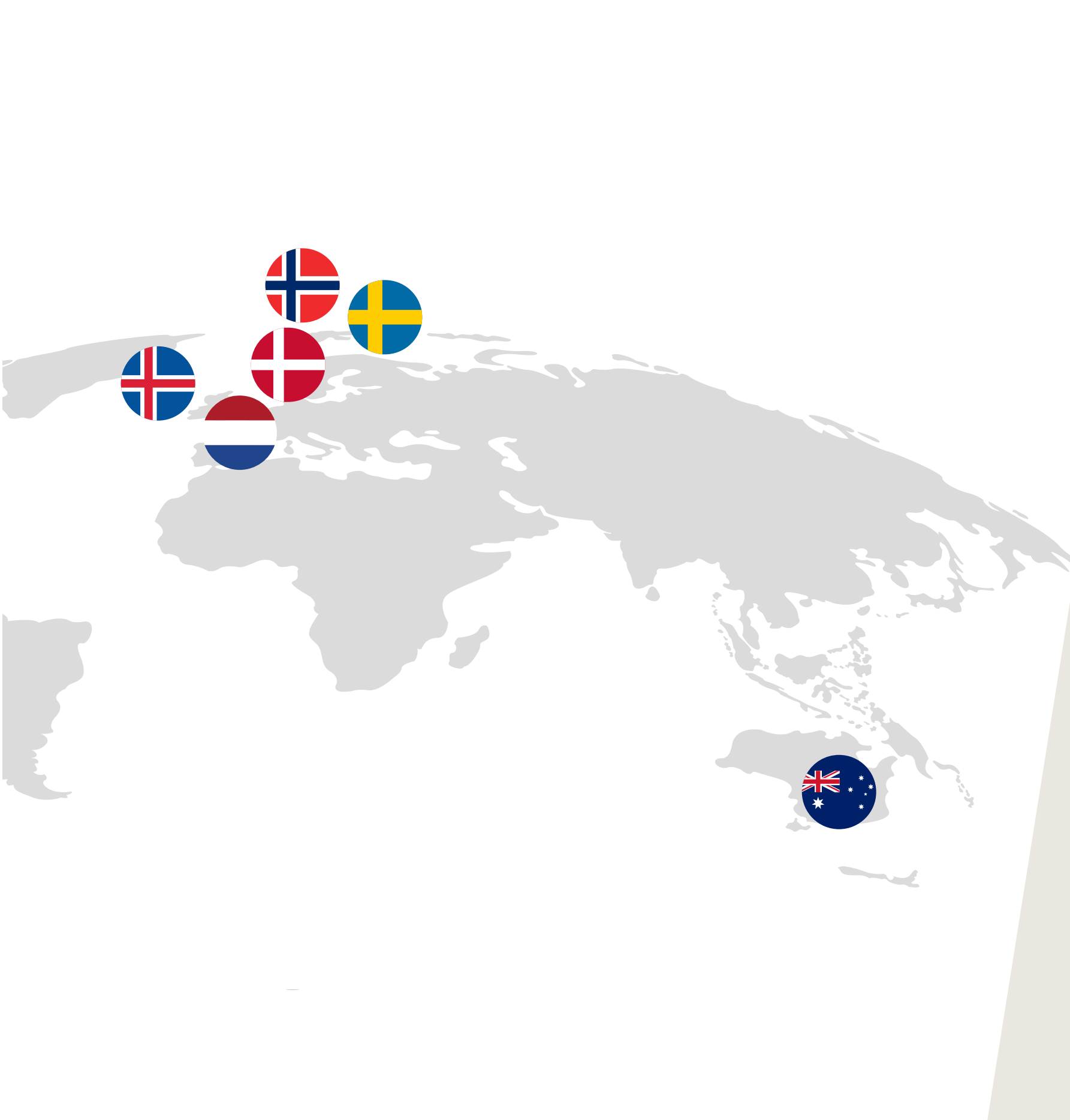
- We strongly believe in Makin', and we see them take a larger and larger market share and show strong growth rates. With the upcoming release of Makin' Surfaces, which is a solution that automatically calculates volumes, the future looks even brighter.

A large part of the project is about calculating volumes. Stefan explains that it will become increasingly important because surveyors spend about 10 to 12 hours per project measuring mass volumes. Automation of this function directly in the system can bring important savings, and the efficiency in the project can be increased.

- We are also helped by the fact that during the seven months that we have used Makin' 3D, we have only required service once for one cable and one sensor.

That has by far exceeded my expectations, says Stefan.





Where to find Makin

NORWAY

Maskinstyring AS

Web: maskinstyring.com

Tel.: +47 482 45 555

Email: post@maskinstyring.com

SWEDEN

Maskin System AB

Web: maskinsystem.com

Tel.: +46 010 457 33 33

Email: info@maskinsystem.com

DENMARK

Maxpartner ApS

Web: maxpartner.dk

Tel.: +45 61 61 16 72

Email: salg@maxpartner.dk

THE NETHERLANDS

3D-GPS BV

Web: www.3d-gps.nl

Tel.: +31 416 85 30 36

Email: info@3d-gps.nl

AUSTRALIA

Machine Control Australia

Web: www.machinecontrolaustralia.com

Tel.: +0407 870 421

Email: info@machinecontrolaustralia.com

Makin' a Difference

*- Filling the digital project
needs in heavy construction*

Makin' social contact with you



We are close to you

Headquarters

Makin AS
Ingelsrudvegen 350
2324 Vang H.
Norway
Org. no. 920 323 650

Showroom, warehouse

Makin AS
Vognvegen 23
2072 Dal
Norway
www.makin3d.com

Development

Makin ApS
Cortex Park Vest 4, 1. 3
5230 Odense M.
Denmark
www.makin3d.com

MAKIN

Local contact

